

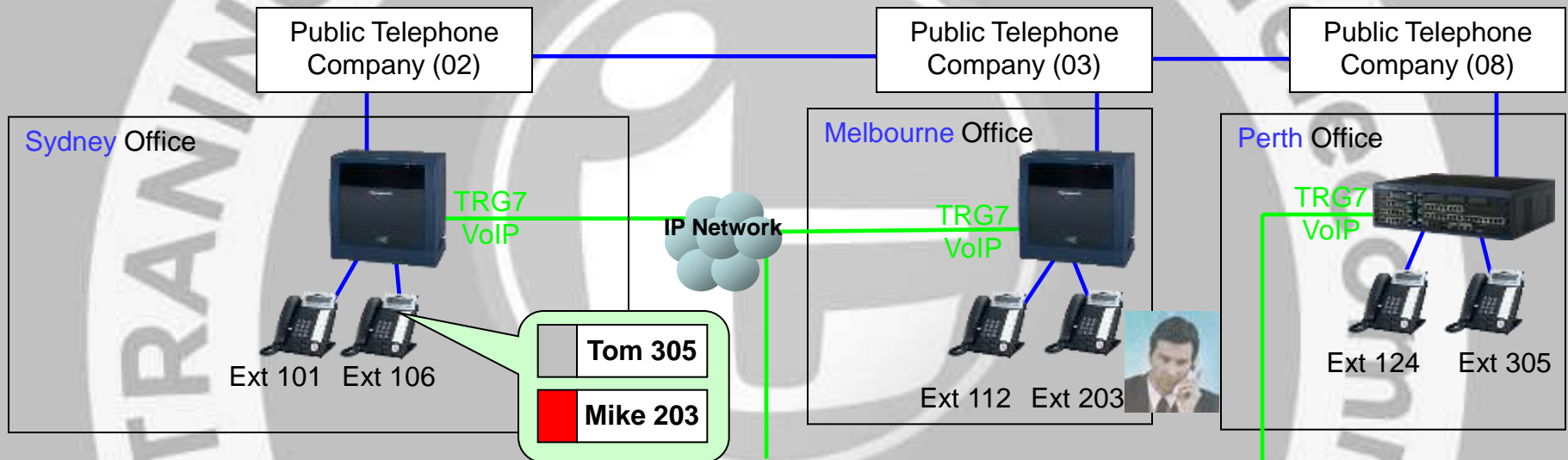
Network DSS key

Busy status of extension in other PBX can be displayed using Network DSS key.

This document explains how to program for above.

Request

PBX user wants to see busy status of extensions in other PBX.



Solution

Network DSS key feature works between Max.8 PBXs.

One PBX can receive busy status of 250 extensions in other PBXs.

- Activation key is required for TDE-NCP.
- TDAx920 SD card is required for TDA.
- "TIE call by extension numbering" does not support Network DSS.
"TIE call by other PBX extension" or "PBX Office Code" has to be used.
- Network DSS key cannot be used for call pickup.

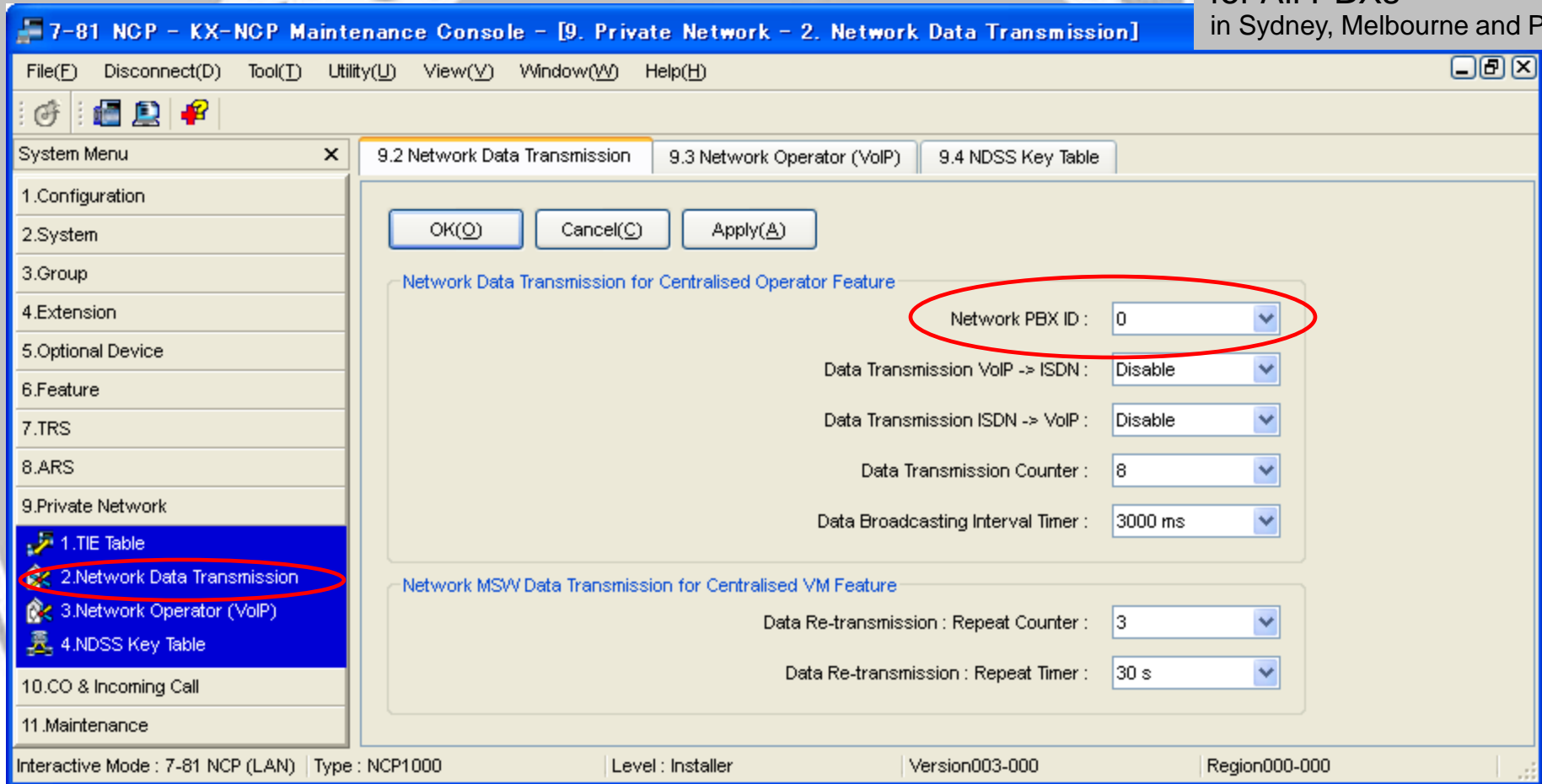
Activation Key (Enhanced Feature)
KX-NCS3910 for NCP500-1000
KX-NCS4910 for TDE100-200
KX-NCS4950 for TDE600



**Programming
for
Network DSS Key**

Programming -1

Programming Example
for All PBXs
in Sydney, Melbourne and Perth



Assign Network PBX ID (1 to 8).

“1” for PBX in Sydney

“2” for PBX in Melbourne

“3” for PBX in Perth

Programming -2

Programming Example
for PBX in Sydney

7-81 NCP - KX-NCP Maintenance Console - [9. Private Network - 3. Network Operator (VoIP)]

File(F) Disconnect(D) Tool(T) Utility(U) View(V) Window(W) Help(H)

System Menu

- 1. Configuration
- 2. System
- 3. Group
- 4. Extension
- 5. Optional Device
- 6. Feature
- 7. TRS
- 8. ARS
- 9. Private Network
 - 1. TIE Table
 - 2. Network Data Transmission
 - 3. Network Operator (VoIP)
 - 4. NDSS Key Table
- 10. CO & Incoming Call
- 11. Maintenance

9.2 Network Data Transmission | 9.3 Network Operator (VoIP) | 9.4 NDSS Key Table

OK(O) Cancel(C) Apply(A)

No.	Network Operator Extension No. (16 digits)	IP-GW Card Slot No. to notify BLF data to Network Operator
1	203	V1
2	305	V1
3		Undefined
4		Undefined
5		Undefined
6		Undefined
7		Undefined
8		Undefined

Interactive Mode : 7-81 NCP (LAN) | Type : NCP1000 | Level : Installer | Version003-000 | Region000-000

Busy status of extensions in Sydney is informed to PBX which has extension 203 and PBX which has extension 305 through “Virtual Slot 1”. PBX in Melbourne (= PBX has extension 203) informs the received busy status to all extensions in PBX in Melbourne. “30-201” is assigned for “PBX office code” method in stead of “7-30-201”.

Programming -3

Programming Example
for PBX in Sydney

The screenshot shows the '7-81 NCP - KX-NCP Maintenance Console' window. The title bar indicates the current view is '9. Private Network - 4. NDSS Key Table'. The interface includes a menu bar (File, Disconnect, Tool, Utility, View, Window, Help) and a toolbar. A 'System Menu' is visible on the left, with '4. NDSS Key Table' selected and circled in red. The main area displays three tabs: '9.2 Network Data Transmission', '9.3 Network Operator (VoIP)', and '9.4 NDSS Key Table'. Below the tabs are buttons for 'OK(O)', 'Cancel(C)', 'Apply(A)', and 'NDSS Clear(R)'. A table is shown with the following columns: 'No.', 'Network Extension No. (16 digit)', 'Network Extension Name for Programming Reference (20 characters)', and 'Network PBX ID of Network Extension to be monitored'. The table contains 10 rows, with a red box highlighting the first six rows. The status bar at the bottom shows 'Interactive Mode : 7-81 NCP (LAN) | Type : NCP1000 | Level : Installer | Version003-000 | Region000-000'.

No.	Network Extension No. (16 digit)	Network Extension Name for Programming Reference (20 characters)	Network PBX ID of Network Extension to be monitored
1	201		
2	202		
3	203		
4	204		
5	305		
6	306		
7			
8			
9			
10			

Assign extension number of PBX in Melbourne or PBX in Perth.
Maximum 250 entries.
Therefore one PBX can receive busy status of 250 extensions in other PBXs.

30-201" is assigned for "PBX office code" method. "7" is required.

Programming -4

Programming Example for PBX in Sydney

System Menu

- 1. Configuration
- 2. System
- 3. Group
- 4. Extension
 - 1. Wired Extension
 - 1. Extension Settings
 - 2. FWD/DND
 - 3. Speed Dial
 - 4. Flexible Button**
 - 5. PF Button
 - 6. NDSS Link Data - Send
 - 7. Simplified Voice Message
 - 2. Portable Station
 - 3. DSS Console
- 5. Optional Device
- 6. Feature
- 7. TRS
- 8. ARS
- 9. Private Network
- 10. CO & Incoming Call
- 11. Maintenance

2.6.1 Main | 9.4 NDSS Key Table | 1.1 Slot | 4.1.4 Flexible Button

OK(O) | Cancel(C) | Apply(A) | Copy to(I) | Key Label Print(P)

Extension Number / Name: 101 /

Form(E) | Key Label File

Display Option

- Key Setting
- Key Setting & Key Label Name

When Label Name is not programmed in this PC.

- Extension name or number is displayed for DSS key
- Speed dial name or programmed telephone number is displayed for one touch key.
- Above key setting with parameter is displayed for other keys.

Telephone Type: T7633 / T7636

Key Location	Type	Parameter Selection	Extension Number	Extension Name	Dial (Max. 32 digits)	Label Name (Max. 12 characters)	Optional Parameter (Ringing Tone Type Number)
1	Single CO	01 :				01	Ringing Tone Type 01
2	Single CO	02 :				02	Ringing Tone Type 01
3	Single CO	03 :				03	Ringing Tone Type 01
4	Single CO	04 :				04	Ringing Tone Type 01
5	Single CO	05 :				05	Ringing Tone Type 01
6	Single CO	06 :				06	Ringing Tone Type 01
7	Single CO	07 :				07	Ringing Tone Type 01
8	Single CO	08 :				08	Ringing Tone Type 01
9	Single CO	09 :				09	Ringing Tone Type 01
10	Single CO	10 :				10	Ringing Tone Type 01
11	NDSS			201		11	
12	NDSS			202		12	
13	Single CO	13 :				13	Ringing Tone Type 01

Batch Mode: Type : TDE200 | Level : Installer | Version005-000 | Region006-017

“Dial” has to be programmed in previous page.

After this programming, press NDSS button of one extension in order to ask other PBX to send busy status of the network extension.

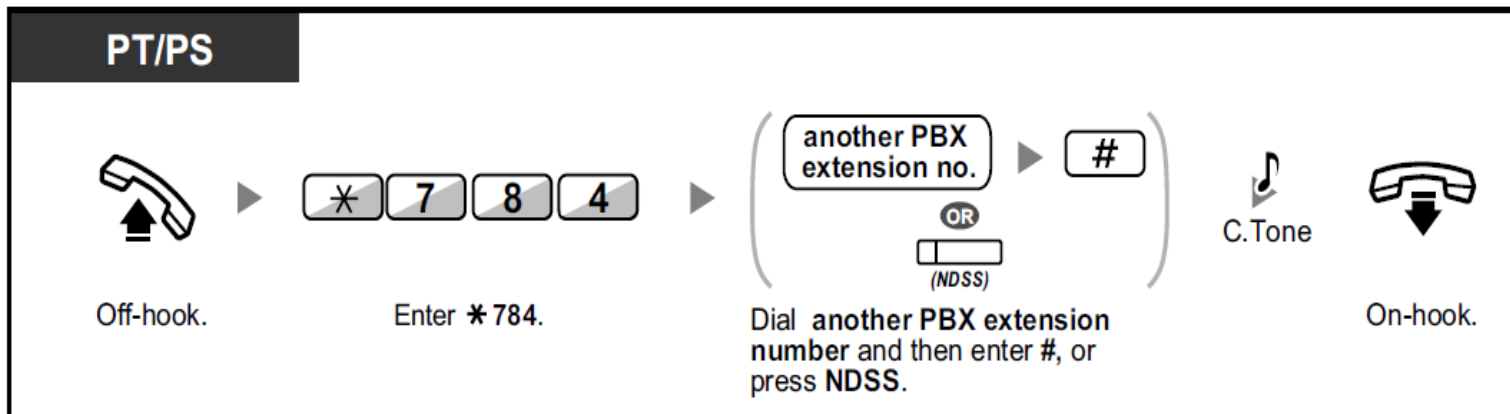


Remark

Remark -1

2.1.7 Releasing Network Direct Station Selection (NDSS) Monitor

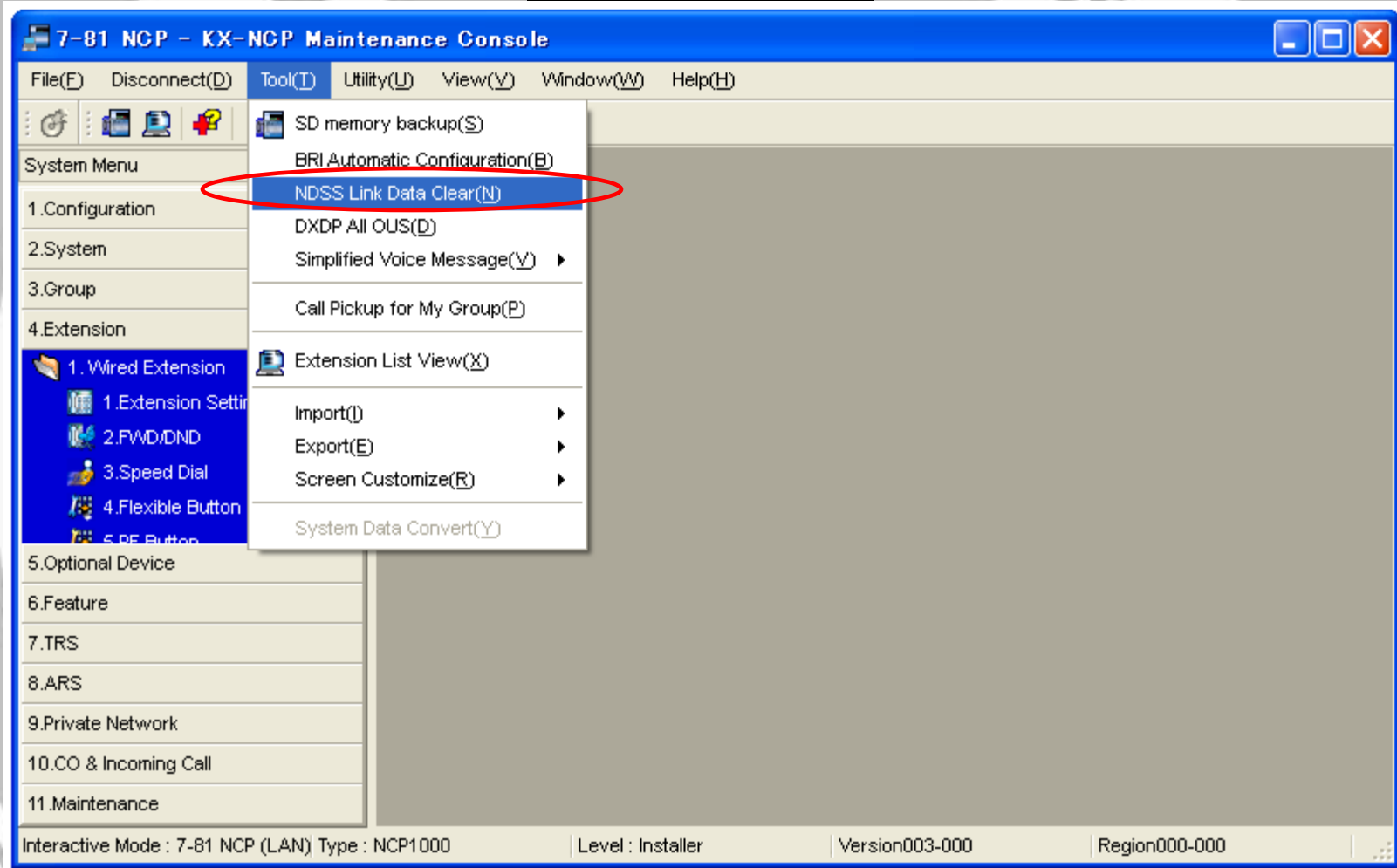
NDSS buttons can be customised on any extension connected to your PBX. An NDSS button allows an extension user to monitor another extension connected to another PBX in a private network. The NDSS button light shows the current status of the monitored extension in the same way as a DSS button. When it becomes unnecessary to monitor an extension connected to another PBX, the manager can stop the PBX from monitoring it. Any NDSS buttons set to monitor that extension will also stop monitoring.



- To restart monitoring of an extension after performing this operation, go off-hook, press the corresponding NDSS button, and go on-hook.

This operation is allowed for manager extension. (Manager is enabled by COS.)

Remark -2



It is possible to stop sending busy status to all other PBXs using this tool. After using this tool for each PBX, press NDSS button to restart to receive busy status again.

Remark -3

7-81 NCP - KX-NCP Maintenance Console - [4. Extension - 1. Wired Extension - 6. NDSS Link Data - ...]

File(F) Disconnect(D) Tool(T) Utility(U) View(V) Window(W) Help(H)

System Menu x

4.1.6 NDSS Link Data - Send

OK(O) Cancel(C) Apply(A)

Extension Number / Name 3021 / SE Test

Description	Value
Network BLF Data to NDSS Key of Other PBX	
Other PBX (Network PBX ID =1)	Off
Other PBX (Network PBX ID =2)	Off
Other PBX (Network PBX ID =3)	Off
Other PBX (Network PBX ID =4)	Off
Other PBX (Network PBX ID =5)	Off
Other PBX (Network PBX ID =6)	Off
Other PBX (Network PBX ID =7)	Off
Other PBX (Network PBX ID =8)	Off

Interactive Mode : 7-81 NCP (LAN) Type : NCP1000 | Level : Installer | Version003-000 | Region000-000

If this extension is monitored by other PBX, “On” is displayed as “Value”.



End of Document