

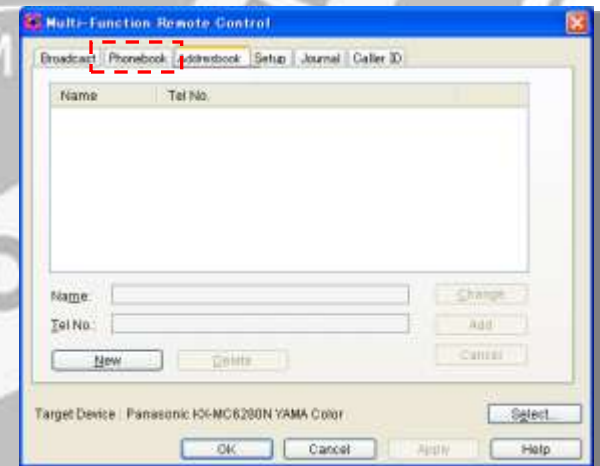
# Scan to Email, Email registration

Aside from Embedded Web, Email Address can be registered on panel.



## Email address registration

- Up to 30 addresses
- Provides ADD / EDIT / SEARCH
- Not support broadcast transmission.  
(A mixture of telephone and email address is not allowed because this is not iFAX.)
- Supports entry in Station key.
- Not support 2 or more destinations on Scan to Email.
- Supports change email address from PC Remote control.

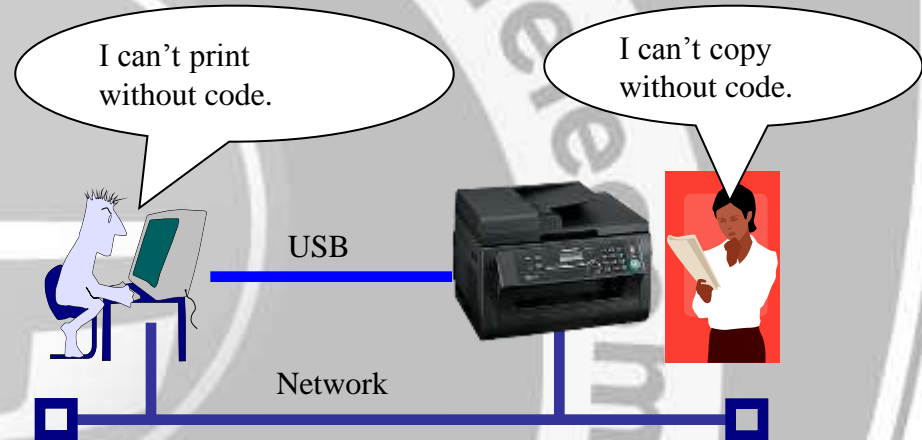


control.

# Mode Restriction

By setting “Mode restriction” to ON, code assigned each department is required to enter for COPY and PRINT.

The department can be registered up to 10 and some user can't use PRINT or COPY depending on the assigned code.



## Specification:

- 10 departments can be registered by administrator.  
The count of print can be managed each department by LCD view and Print report.
- The department is composed of name and code and it can be registered on LCD.  
It can't be done on Remote Control Tool and Embedded Web.
- Provides DELETE / ADD / CHANGE about the department.
- Provides COUNTER RESET / ERASE all registration
- No upper limit of print count.
- Usage restriction (PRINT / COPY)
  - PRINT: Needs to enter CODE on printer driver before sending data.
  - COPY: Needs to enter CODE on LCD panel when starting.
  - SCAN / TEL / FAX: No usage restriction

# Mode Restriction

Example of registration :

Department	Password	Copy	Print	
Dept_01	1111	Yes	Yes	
Dept_02	2222	Yes	Yes	
Dept_03	3333	Yes	No	
Dept_04	4444	Yes	No	
Dept_05	5555	Yes	No	
Dept_06	6666	Yes	Yes	
Dept_07	7777	No	Yes	
Dept_08	8888	No	Yes	
Dept_09	9999	No	Yes	
Dept_10	1234	No	No	

Report of print count :

```
[Print Count (Department)] Model : KX-MB2011
-----
Set Date & Time           : Feb. 10 2012 03:30PM
Your Logo                  :
Your Fax Number           :
-----
Department   Copy       Print
-----
Dept_01      00000100    00000210
Dept_02      00000110    00000110
Dept_03      00000130    00000000
Dept_04      00000140    00000510
Dept_05      00000150    00000510
Dept_06      00000106    00000310
Dept_07      00000206    00000000
Dept_08      00000000    00000300
Dept_09      00000110    00000000
Dept_10      00000111    00000001
-----
Total        00001163    00001951
-----
FAX          00000120
Others       00000100
-----
Total        00003334
-----
```

For registration of department, Name, Code and ON/OFF for COPY and PRINT are required. An administrator can check number of print each department on the report. The report has count of print each categorized feature.

## Job Build

**Can't scan 2 or more pages as a job when using scanner glass.**

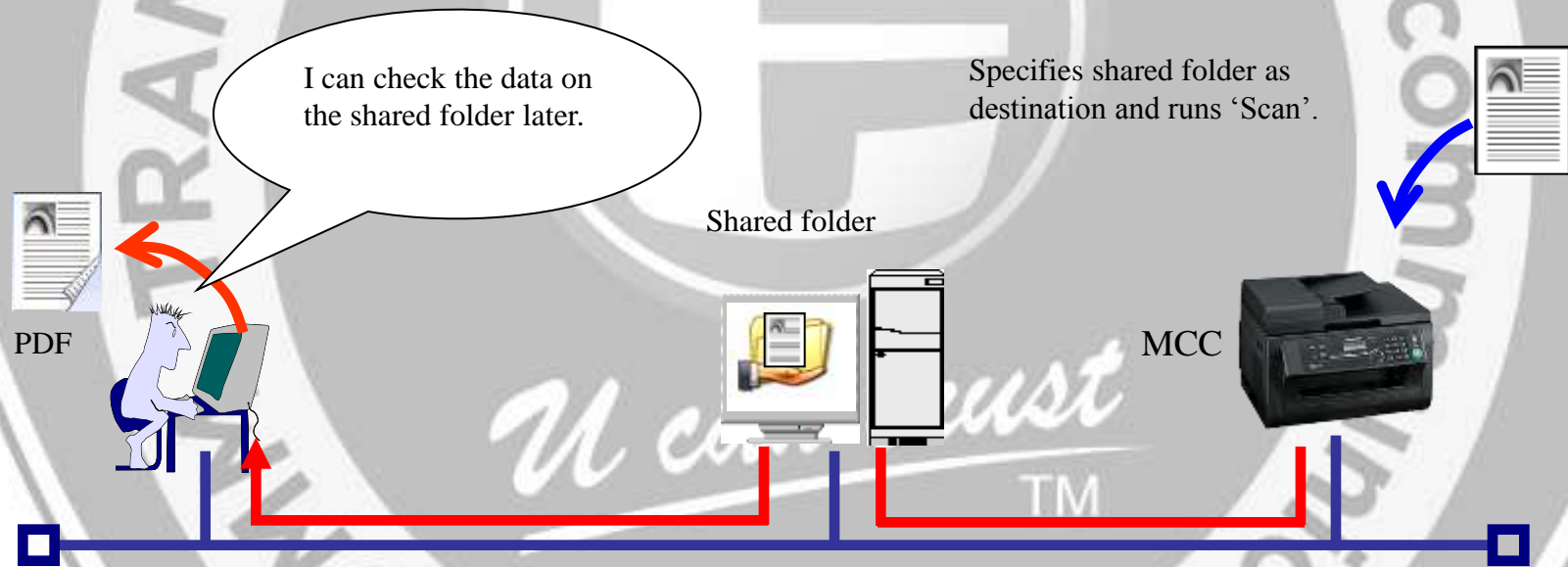
→ Displays new message to check for next document after scanning the first page. (Push scan only)

## Scanning parameter hold

Hold the previous scanning parameter during 1 minute before return to Default mode (Copy or FAX).

# Scan to SMB Folder on browse

This is a function to store scanned data on shared folders. We can share the data without server. The scanned data can be converted to PDF, TIFF and JPEG. The user can specify the shared folder on browser window easily.



- The destination is up to 6 folders.
- It can be edited on Embedded Web.



The shared folder can be selected easily on browser.

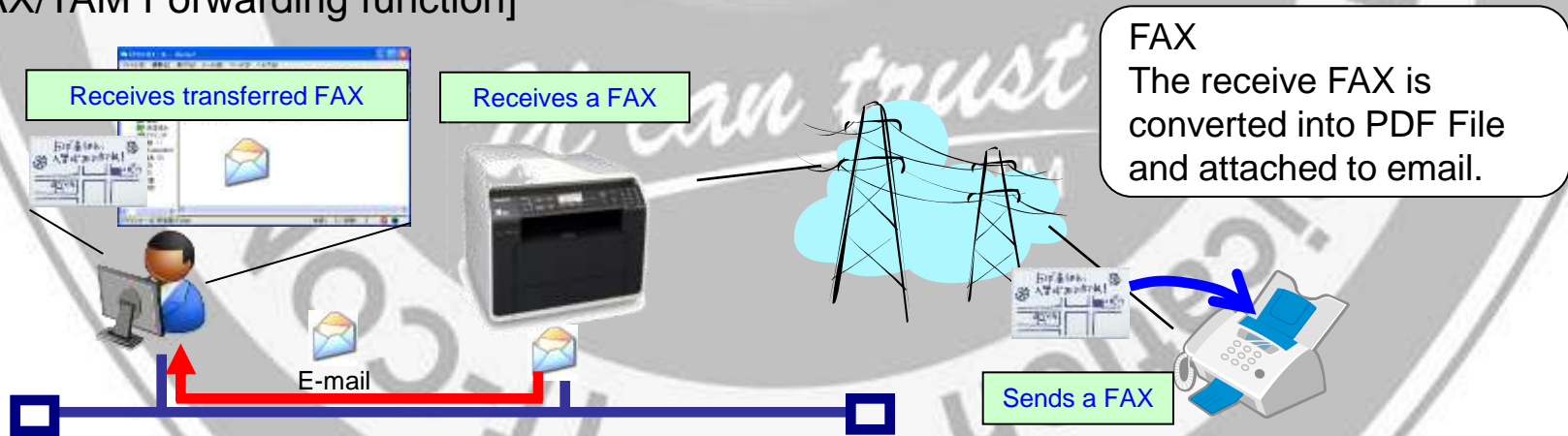
# Automatic FAX Forwarding

An received FAX data is transferred to up to 6 registered email addresses. We can see the data as attached data of email. As an example, by setting up this function before business trip, an SOHO user who works alone can receive FAX data by email when he are away from office. (The received FAX data is printed on this mode, but not printed when Web FAX Preview is ON)

[Feature spec.]

Function	FAX Forwarding	I/F	Number of destination
FAX Auto Email	Up to 5.0MB	Network	Up to 6 Email address

[FAX/TAM Forwarding function]



## FAX Mis-dial Prevention

Implements the following 3 functions to prevent FAX wrong transmission.

◆ Confirm stations: **Default OFF**

Displays message to confirm number of destination before sending a FAX.

◆ Restrict dial: **Default OFF**

Not allowed to enter number directly. Redial is also not allowed to use. Numbers in phonebook are only available.

◆ Re-enter dial: **Default OFF**

When entering number directly and using redial, displays message to re-enter the number for confirmation. Sends a FAX in the case when the 2<sup>nd</sup> entry corresponds with the 1<sup>st</sup> entry.

## FAX Quick Scan Default

Can't keep setting of QUICK SCAN as ON.

- - > Adds new function to make setting of QUICK SCAN as ON.

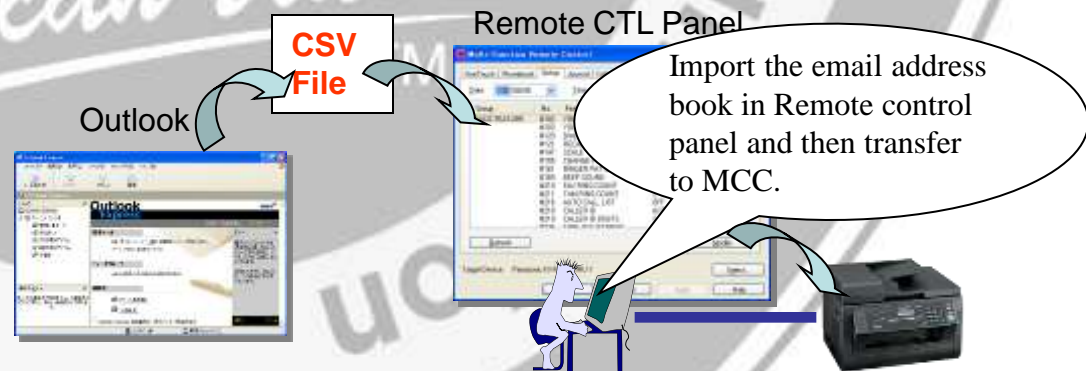
## Support applications for Macintosh in CD-ROM

Include the printer driver and applications for Macintosh in CD-ROM.



## Using CSV format to import the email address book

Using CSV format to import or export the email address book in Remote control panel. And transfer from Remote control panel to MCC.



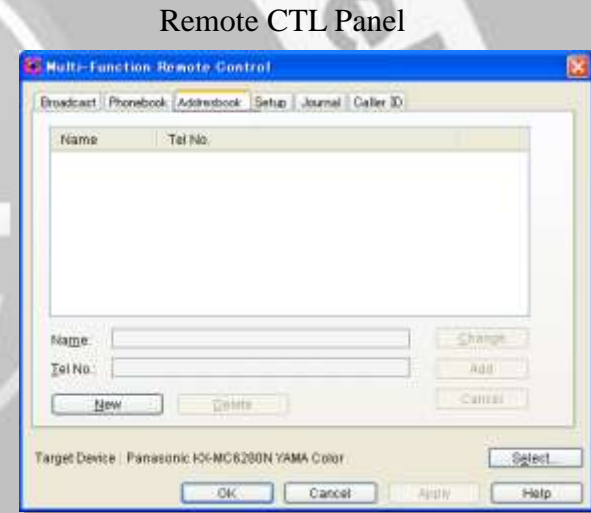


## Address book in Remote Control Panel

Using Remote Control, you can easily operate the email address book from your computer.

- Storing, editing or erasing items in email address Book.
- Using CSV format to import or export the Email address book.

CSV File ⇒ Remote CTL ⇒ MCC



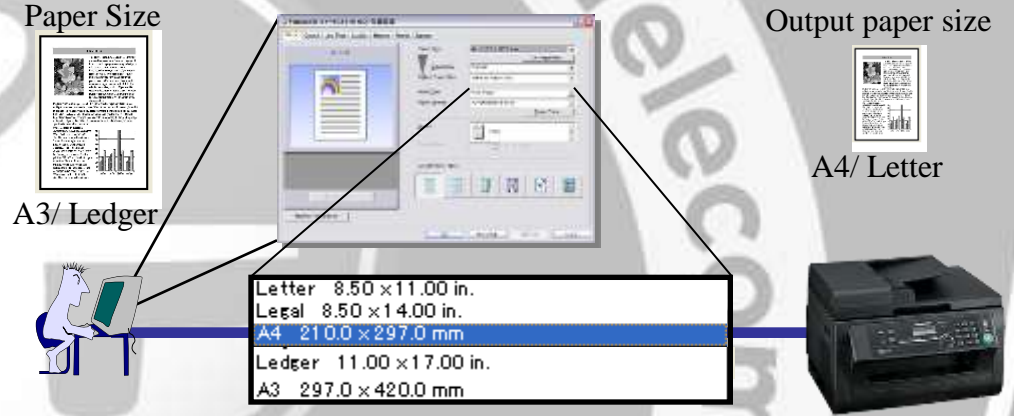
## Scan resolution up to 19,200dpi

**Scanning resolution:**

Up to 19,200 x 19,200 dpi (Interpolated)

# Trial Print

When you want to print a document of A3, Ledger, B4(ISO) or B4(JIS) size with this unit, this document is reduced automatically by selected output paper size and then it is printed.



There are two paper size settings: Paper Size and Output Paper Size.

- Paper Size is the document size as created by the software applications.
- Output Paper Size is the size of paper used by the printer.

# Custom size paper (Only PC print)

Support custom size paper from Tray#2 when print from PC.

Custom [width 210 – 216mm]  
[Length 279 – 356mm]

