

Pengaturan wireless pada ip kamera Panasonic



Panasonic By: **itcGmm**TM
ideas for life *U can trust*

- ▶ Sebelum melakukan pengaturan *wireless* pada ip camera, cobalah mengakses *wireless router* untuk mengetahui *SSID, security mode (chipper), network key / passphrase*. (Sebagai Contoh Disini Penulis Menggunakan Linksys WAG200G Annex-A).

Firmware Version: 1.01.05

Wireless-G ADSL Home Gateway WAG200G

Setup **Wireless** Security Access Restrictions Applications & Gaming Administration Status

Basic Wireless Settings | Wireless Security | Wireless Access | Advanced Wireless Settings

Wireless Network Mode: Mixed

Wireless Network Name (SSID): **cisco**

Wireless Channel: 11 - 2.462 GHz

Wireless SSID Broadcast: Enable Disable

Save Settings Cancel Changes

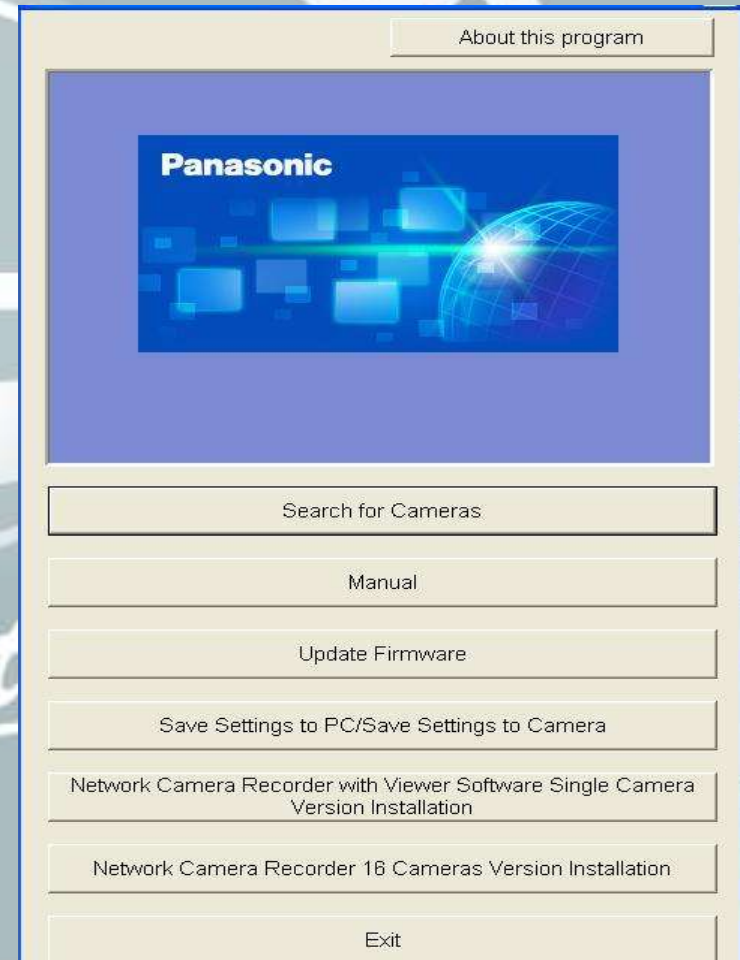
Help...

CISCO

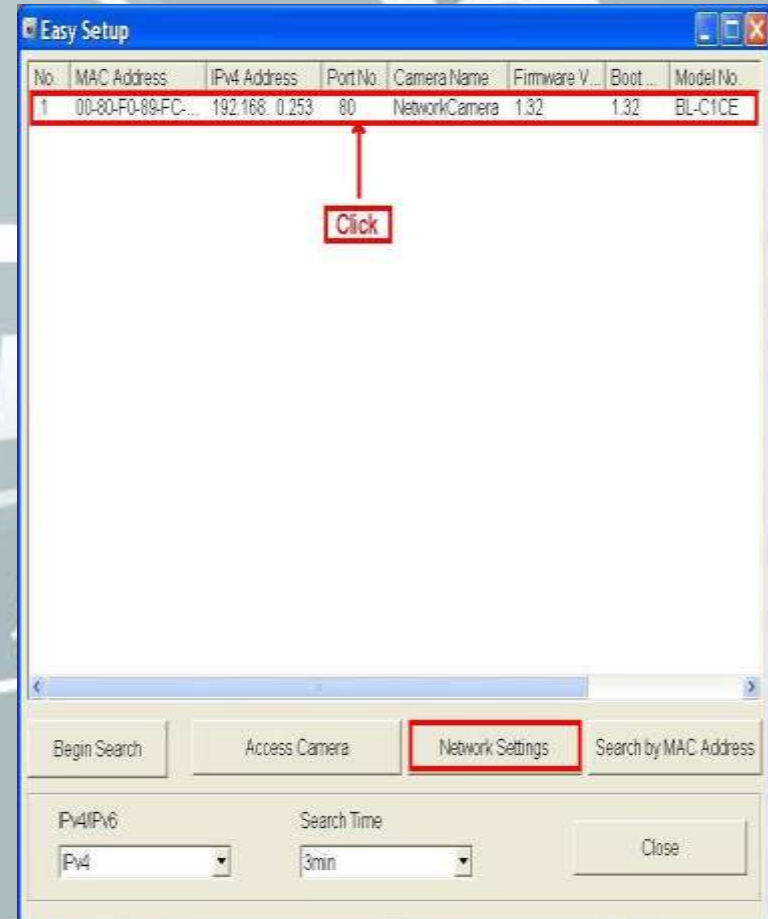
- ▶ Di bawah ini terdapat *security mode, encryption & passphrase* pada wireless router



- ▶ Setelah itu koneksikan kamera dan pastikan semua terhubung dengan baik
- ▶ Masukkan CD software dan jalankan software maka akan muncul tampilan seperti di samping ini
- ▶ klik “*Search for Cameras*”



- ▶ Setelah itu maka akan muncul tampilan seperti disamping ini
- ▶ klik *Mac Address/IP Address* lalu pilih “*Network setting*” untuk mengubah *IP Address*



- ▶ Pada Halaman ini anda dapat mengubah *Network Stetting* pada posisi *Static* atau *DHCP*, *Port No*, *IP Address*, *Subnet Mask*, *Default Gateway*, *Primary DNS & Secondary DNS*. Setelah anda selesai melakukan pengaturan ini lalu klik “*save*”

Network Settings

Network Settings Static DHCP

Port No.

IPv4 Address

Subnet Mask

Default Gateway

DNS Auto Manual

Primary DNS

Secondary DNS

- ▶ Setelah itu akan muncul tampilan di bawah ini, berikan *User Name* (6–15 karakter) & *password* (6–15 karakter) untuk sistem keamanan pada kamera anda

Kantan

Initial Authentication Setting

Set the camera administrator's user name and password.

Initial Authentication Setting	
User Name (6 to 15 Characters)	<input type="text"/>
Password (6 to 15 Characters)	<input type="password"/>
Retype Password	<input type="password"/>

Note:(1)Username and Password is case-sensitive.
(2)It is strongly recommended to change password regularly for security.

Save

- ▶ Untuk verifikasi maka akan muncul user name & password yang telah anda buat tadi dan masukkan *username & password* lalu klik “OK”



- ▶ Setelah mengetahui semua pengaturan pada *wireless router*, lanjutkan pengaturan *wireless* pada ip camera dengan mengubah ke posisi *enable*, Kemudian Klik “*Next>*”



Kantan

Wireless Configuration

These are configurations for wireless network.

Wireless Configuration

Enable

Disable

Next>

- ▶ Masukkan *SSID* sama seperti *SSID yang ada pada wireless router*
- ▶ Pilih salah satu *Communication Mode* nya
- ▶ Pada Encryption Pilih *Cipher* yang terdapat pilihan *WEP* dan masukkan *WEP key, WPA-PSK(TKIP)* dan masukkan *network key, WPA2-PSK(AES)* dan masukkan *network key*
- ▶ Setelah selesai klik “*save*”

CgiWireless

These are configurations for wireless network.
For more information about wireless setup, please refer to
http://panasonic.co.jp/pcc/products/en/netwkc/cam/technic/wireless/cam_set.html

Wireless Configuration

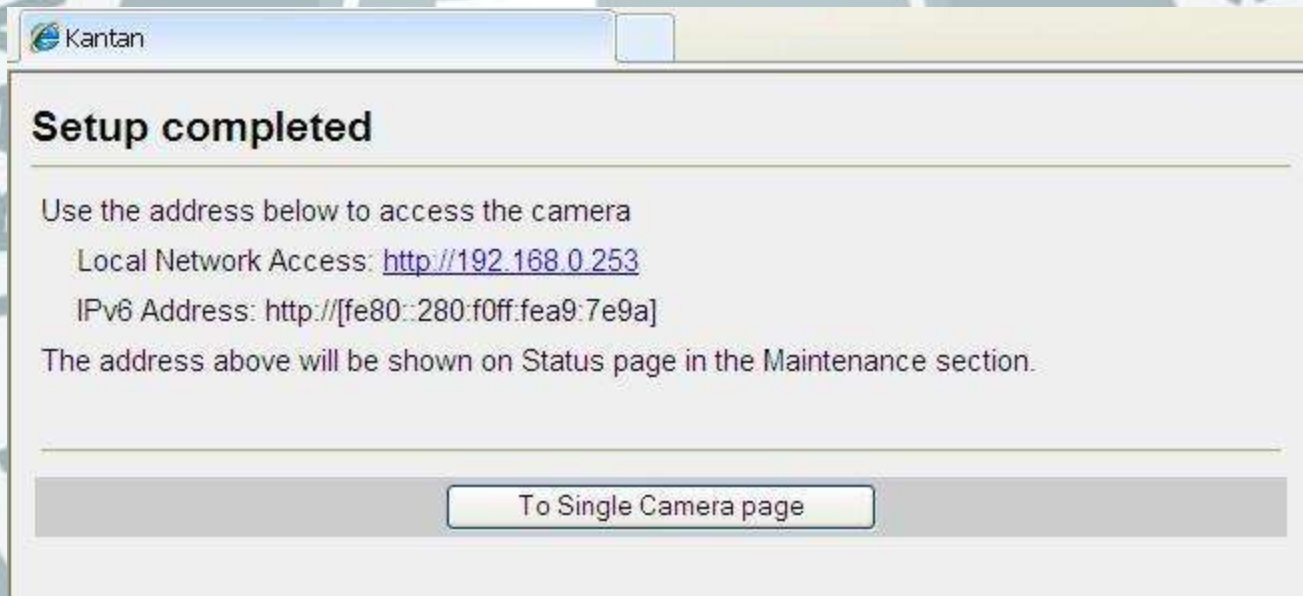
SSID	<input type="text" value="NetCam1142"/>	The name of wireless network.
Communication mode	<input type="radio"/> 802.11b <input checked="" type="radio"/> 802.11b/g <input type="radio"/> 802.11g exclusive	On 802.11b/g mode, camera automatically connects to both APs (802.11b and 802.11g).

Encryption

Cipher	<input type="text" value="No encryption"/>	
WEP Key 1	<input type="text"/> <input type="text" value="ASCII13characters 128bit"/>	Indicate the number of key to use from WEP Key 1 to 4. This number must be same as that of router and input same keys. When configuration is changed, it takes about 1 minute to complete change. Since the connection with router would be disconnected while it, you could not access to camera if switch is "Wired" mode. Please access after the connection is resumed.
WEP Key 2	<input type="text"/> <input type="text" value="ASCII13characters 128bit"/>	
WEP Key 3	<input type="text"/> <input type="text" value="ASCII13characters 128bit"/>	
WEP Key 4	<input type="text"/> <input type="text" value="ASCII13characters 128bit"/>	

<Back **Save**

- ▶ Pengaturan telah selesai, dan untuk mengakses kamera Klik “*to single camera page*”.



- ▶ Kita juga dapat melakukan Pengaturan *wireless* pada menu *setup* (pengaturan) dengan memilih *wireless*

Top Single Multi Buffered Image **Setup** Internet Maintenance Support

Basic

- Network (IPv4)**
- Network (IPv6)
- HTTPS
- Wireless**
- UPnP
- DynamicDNS
- Date and Time
- Camera
- Audio
- Video Streaming

Account

- Administrator
- General User

Buffer/Transfer

- Trigger
- Motion Detection

Network (IPv4)

Set up network configuration.
Select "Automatic Setup" if you connect the camera to the router and wish to set it up automatically.
Select "Static" if you wish to assign a static IP address to the camera.
Select "DHCP" if you are using the DHCP function of your router or ISP.

Connection Mode	
Connection Mode	Current Setting
Automatic Setup	X
Static	
DHCP	

Configure network settings automatically
Assign static IP address to the camera.
Get IP address from DHCP server

The following settings are necessary if you use a proxy server and you want to transfer images or send trigger notifications via HTTP.
If you do not use a proxy server, these settings are unnecessary.

Proxy Server Settings	
Address	<input type="text"/>
Port No.	<input type="text" value="8080"/>

Enter the [proxy server](#) address.

Internet

- ▶ Lalu Masukkan *SSID* yang ada pada *wireless router*, pilih *communication mode 802.11 b/g*, pilih *Chiper* & masukkan *network key wireless router* lalu klik “*Save*”.

Top Single Network Camera Internet Maintenance Support
http://192.168.0.253/CgiStart?page=Setup&Language=0

camera to WIRELESS and restart the camera.
For more information about wireless setup, please refer to
http://panasonic.co.jp/pcc/products/en/netwkcama/technic/wireless/cama_set.html

Wireless Configuration


SSID: The name of wireless network.

Communication mode:
 802.11b
 802.11b/g
 802.11g exclusive
On 802.11b/g mode, camera automatically connects to both APs (802.11b and 802.11g).

Encryption

Cipher: When encrypting with TKIP/AES, enter the network key. Use the same key and key type used by your wireless router.

Network Key: ASCII, 8 to 63 Characters
When configuration is changed, it takes about 1 minute to complete change. Since the connection with router would be disconnected while it, you could not access to camera if switch is "Wired" mode. Please access after the connection is resumed.

- 
- ▶ Setelah pengaturan wireless sudah selesai, rubah posisi wire ke posisi wireless pada unit kamera yang berada di samping kamera
 - ▶ Setelah itu cabut kabel adaptor pada kamera beberapa saat lalu pasang kembali
 - ▶ Apabila kamera sudah terkoneksi ke jaringan wireless pada wireless router maka indikator lampu akan berwarna hijau

Terima Kasih

Gunardi

Product support

gunardi@panasonic-itcomm.com

